

The HELLA logo is positioned in the top right corner. It features the word "HELLA" in a bold, black, sans-serif font. The letter "E" is stylized with three horizontal bars in yellow, red, and blue.The background of the advertisement is a close-up, slightly blurred photograph of insect screens. The screens are made of a fine, dark mesh and are arranged in a row, creating a sense of depth. A diagonal line separates the top white section from the bottom yellow section. The bottom section is a solid yellow color.

# BREATHE FREELY

Insect screens



# SYSTEMATIC PROTECTION

## Convenience and Comfort

Installing effective protection against stinging pests and annoying pollen means you can unwind and relax. HELLA has the perfect insect screen for every window and door opening, every structural situation, and every climate – effective and stylish, plus it can be retrofitted. HELLA provides insect screen fabrics that offer almost everything – from a clear view to protection against pollen, all in many different configurations and colors.







# PLEATS

## Space-saving and Practical

Pleated insect screens are an effective and space-saving solution to protect against mosquitoes, wasps, and other insects. The practical recessed handles on the inside and outside allow the pleated blind to be adjusted over the full height from both sides. Because its handles don't protrude, it can be mounted perfectly behind any sun protection device. An installation depth of just 18 mm and good packaging mean the pleated blinds fit into even the smallest recesses.

- Extremely stable thanks to pleats
- Can be operated from both sides due to handle profile
- Max. width: 2.2 m
- Max. height: 2.85 m

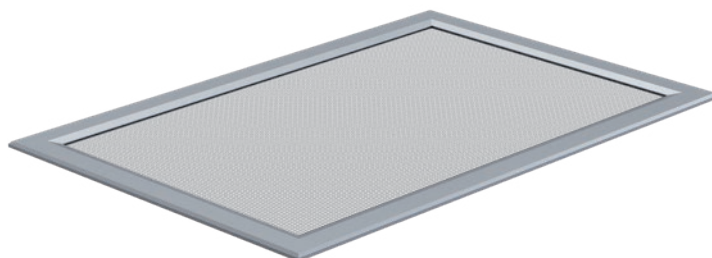


# LIGHT SHAFT COVER

## Weather-resistant and Versatile

Light shaft covers protect light and cellar shafts against leaves, rodents, and insects. They are also weather-resistant, ensure light transmission, and allow air to permeate. The versions with screw fastenings are particularly suitable for seasonal use.

- Suitable for all standard light and cellar shafts
- Glued or screwed assembly
- Four-sided or three-sided support
- Max. width: 2 m
- Max. depth: 1.3 m



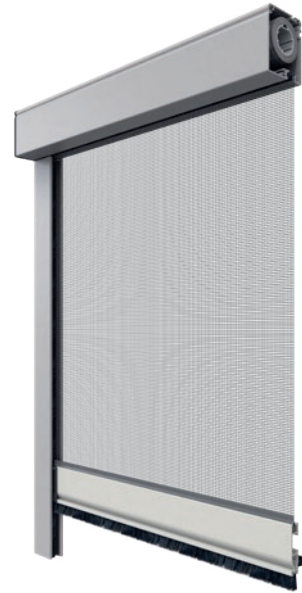


# ROLLER BLINDS

## Convenient and Uncompromising

Due to its quick and convenient operation, the roller blind insect screen is the most uncompromising in HELLA's range. The cassette is really compact, measuring just 43 x 52 mm, and is therefore suitable for any window recess. The Easy-Click end rod automatically locks the roller blind and releases it when it is pushed down again. The spring mechanism enables quick opening and closing, while the integrated recoil brake prevents the roller blind from shooting back up. Thanks to the integrated brushes in the guide rails, cassettes, and end rod, the roller blind seals even more reliably.

- Suitable for all window types
- Can be operated using the handle profile or recessed handle
- Cassette shape: quarter round or square
- Max. width: 2.2 m
- Max. height: 2.8 m



# FIXED FRAME

## Simple and Sturdy

### Clamping frame

Clamping frames are among the most traditional insect screen solutions. They can be universally adapted to the respective window type and are suitable for every installation situation with different mounting options.

- Suitable for all window types
- Easy to unhook without tools
- Fastening without screws possible
- Max. width: 2.3 m
- Max. height: 2.3 m



# MOVING FRAMES

## Fixed and Flexible

The insect screen frames from HELLA are a perfect match for all standard door and window systems and can be installed in just a few simple steps – providing effective protection that is almost invisible. Compact dimensions, various fixing options, and the flexibility of the swing frames, sliding frames, and pendulum frames provide customized protection with a modern design.



### Swing frame

The swing frame can be fitted with different brush seals on all sides as desired, making it highly adaptable. Thanks to the kick plate for foot operation, it is easy to open, even if you don't have a hand free. The swing frame is also available with double wings if the opening is wider.

- Can be installed in front-mounted roller shutters
- Optional cat flap available
- Max. width: 3 m
- Max. height: 2.85 m



### Sliding frame

The sliding frame is used for multi-leaf window and door elements and provides stability even for larger dimensions. With an external casing, there are additional options such as side installation in the reveal to span the weatherboarding.

- Available without horizontal cross bars
- Max. width: 4 m
- Max. height: 2.5 m



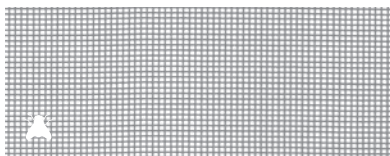
### Pendulum frame

Pendulum insect screen frames can be opened in both directions. A kick plate allows the door to be opened easily and an integrated spring-loaded closer gently closes the door automatically. Pendulum frames are also available with double wings, for example for wider openings, and in many other designs.

- Optional cat flap available
- Max. width: 2.4 m
- Max. height: 2.6 m

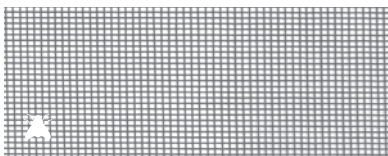
# TYPES OF COVERS

One system, numerous features



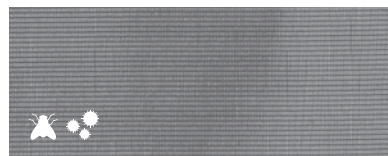
### Standard

Fabric made of PVC-coated fibreglass with high tearing strength and weather resistance.



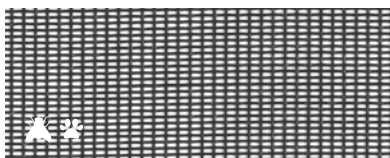
### VistaScreen

Fabric with improved visibility and increased air permeability.



### Pollen screen

Polyester fabric that keeps out up to 99 % of grass and birch pollen, as well as 90 % of ragweed and nettle pollen.



### Petable pet fabric

Polyester fabric with high tear resistance, ideal for pets.



### Aluminium

Fabric made of aluminium for increased protection against rodents and improved visibility.



### Stainless steel

Wear-resistant and durable stainless steel cover made of particularly strong wires for maximum protection against rodents and insects.

	Standard	VistaScreen	Pollen screen	Petable	Aluminium	Steel
Pleated blind	■					
Light shaft cover						■
Roller blind	■	■				
Clamping frame Swing frame Sliding frame	■	■	■	■	■	
Pendulum frame		■		■		
Color	Grey Black (pleated blinds)	Black	Black	Black	Grey	Silver



**HELLA**

**Flyer | Insect screen**

7560 0008\_EN

06/2024

Subject to technical, typesetting and printing changes and errors.